

MYERS® MRJ

The Myers® Ready Jon system is an economical solution for basement toilet applications. The system is placed on top of the floor surface – eliminates the costly plumbing and concrete work of typical installations. System includes pump, poly tank, discharge piping assembly and check valve.

APPLICATIONS

Basement bathroom

SPECIFICATIONS

Capacities – 95 GPM (360 LPM)
Shut-off Head – 19' (5.8 m)
Solids Handling – 2" (50.8 mm)
Liquids Handling – Septic effluent and sewage
Intermittent Liquid Temperature – Up to 140°F (60°C)
Motor/Electrical Data – 4/10 HP, permanent split capacitor type, 115V, 12A, 1Ø, 60Hz
Acceptable pH Range – 5-9
Discharge, NPT – 2" (50.8 mm)
Housing – Heavy cast iron
Power Cord – 10' (20' optional)
Impeller – Recessed, thermoplastic
Volute Case – Cast iron
Shaft Seal – Type 11A, carbon and ceramic



FEATURES

Surface Installation

Ideal for basements, room additions, factories and warehouses

Economical Alternative

Perfect for installations where budget is a concern – no concrete floors to break up

Versatile Fit

Easily accommodates a variety of toilet styles

Heavy-duty Tank Design

Corrosion-resistant, heavy-duty poly tank with curved edge design for increased strength

Built-in Look

Tank and piping can be hidden behind a wall

Industry-proven Reliability

System includes the reliable and tested SRM4 series pump

Superior Pump Design

- Oil-cooled motor for continuous lubrication and heat dissipation
- Recessed impeller design facilitates the free flow of solids up to 2"
- Internal heat sensor provides overload protection and automatic reset

Powerful Torque

High-torque, permanent split capacitor (PSC) motor; no starting switches or relays to wear out

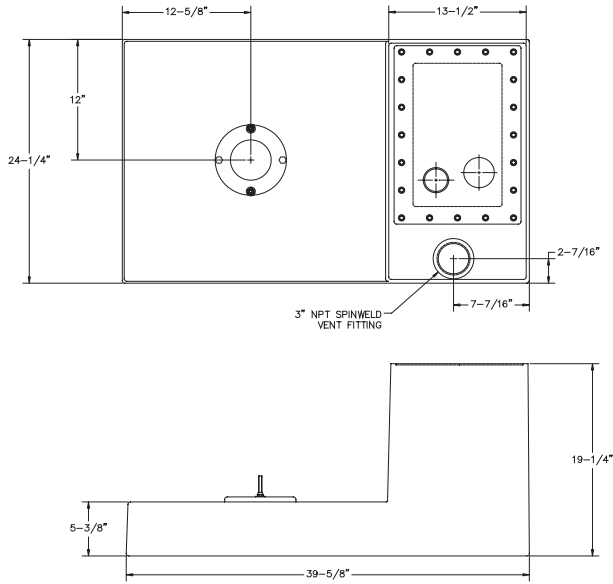
ORDERING INFORMATION

Catalog Number	HP	Volts	Phase/ Cycles	Amps	Discharge Size	Switch Type	Cord Length	Approx. Wt. Lbs.
MRJ-1	4/10	115	1/60	12	2"	Vertical Automatic*	10'	90

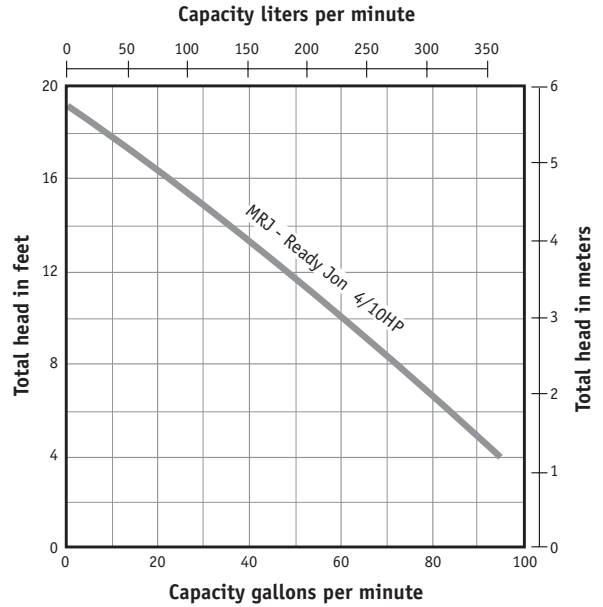
*Piggyback

MYERS® MRJ

DIMENSIONS



PUMP PERFORMANCE



USA
293 WRIGHT STREET, DELAVAN, WI 53115 WWW.FEMEYERS.COM
PH: 888-987-8677 ORDERS FAX: 800-426-9446

CANADA
269 TRILLIUM DRIVE, KITCHENER, ONTARIO, CANADA N2G 4W5
PH: 519-606-5484 ORDERS FAX: 800-426-9446

Because we are continuously improving our products and services, Pentair reserves the right to change specifications without prior notice.